

August - October 2013



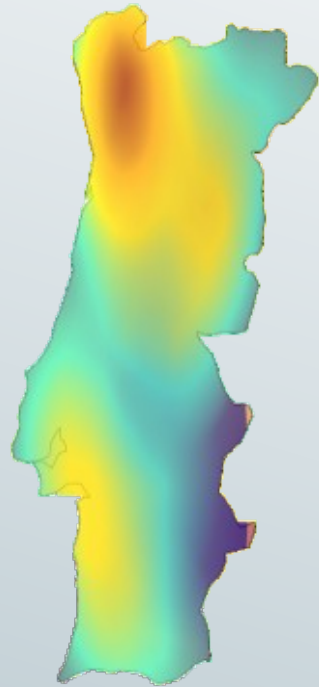
Grid Intelligence

& Optimisation

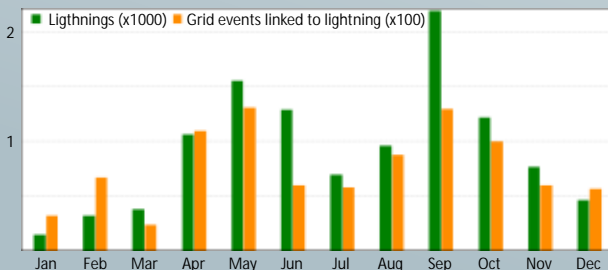


Transmission grid and elevation map.

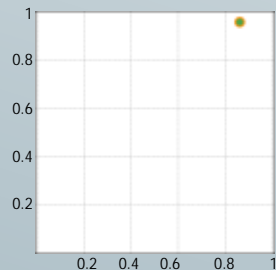
Source: REN



*lightning strikes and line tripping:
spatial correlation*



time correlation for lightning



spatial - time correlation for lightning

2nd - 5th September

CIGRÉ International Conference on Condition Monitoring, Diagnosis and Maintenance – CMDM 2013 Modern Management Technology

The second edition of the International Conference on Condition Monitoring, Diagnosis and Maintenance (CMDM) organized every other year by CIGRÉ National Committee of Romania was held in Bucharest on the first week of September 2013. This conference represents one of the most important events of the Romanian power industry and provides a venue for CIGRÉ members and interested parties to present fundamental and technological developments and to promote key suppliers of products and services for electrical power systems. Discussions follow a very practical tone from specialists that handle high power systems on a daily basis.



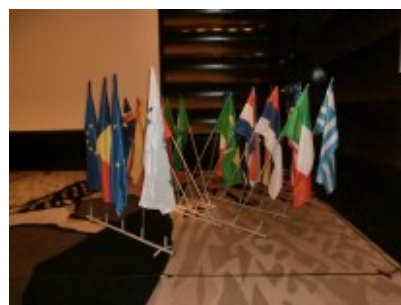
CMDC 2013 Conference
Photo: Courtesy of CIGRÉ Romania

¿Vitor Almeida from Albatroz Engineering presented the paper “*Advances in Vegetation Management to improve Reliability*” at CMDM 2013 co-authored by Albatroz Engineering and REN (the Portuguese TSO) . This paper describes the work related to vegetation during the last years in the Portuguese transmission grid. Incidents associated to vegetation in the Portuguese transmission grid have decreased from one of the major causes to negligible impact in less than a decade. This was due to the cumulative effect of four independent, yet concurrent, programs:

- 1) Routine clearance inspections with LiDAR;
- 2) Classification of vegetation severity, growth rate;
- 3) Selective maintenance and inspection;
- 4) Maintenance of bio-fuel secondary routes.

The most recent circuit tripping associated to vegetation occurred in October 2009.

To improve quality of service, REN combines information from the four programs with environmental, reliability and asset management data with third party information. Given that the outcome (incidents due to vegetation) is already at an optimal level, the current research will try to increase the process efficiency as well. Albatroz Engineering also attended the tutorials and technical papers sessions and taking into account the subjects related to inspection Over Head Line (OHL), stood out for the tutorials “*Electricity Highways in Europe from Smart Grid perspective*” and “*Wind induced conductor motions on EHV and UHV transmission lines. Control and monitoring methods*”, very interesting tutorials about current and future challenges for OHL.



Flags of the countries that participated at CMDC 2013

10th October

Porutuguese - French Trophies

The Portuguese-French Chamber of Commerce and Industry (Câmara do Comércio e Indústria Luso-Francesa - CCILF) organised for the 20th consecutive year the Luso-French trophies.

This event aims to boost bilateral trade ties between Portugal and France and support the member businesses, recognising the effort and success of many entities in the development of strategies and investments in both markets. Trade between France and Portugal risen in 2012, despite the European economic doldrums and has diversified from traditional food and manufacture products into new sectors high added-value sectors like aeronautical components and engineering services.

The awards took place on October 10, during a Soirée at the Pestana Palace Hotel, in Lisbon, and were chaired by the Assistant Secretary of State and Economy, Leonardo Mathias. The jury was composed by representatives of major French and Portuguese entities linked to foreign trade, including the AICEP the Foreign Trade Agency and IAPMEI, the SME Agency.

The CCILF received a total of 45 candidates for the seven presented categories: Portuguese Export Trophy, French Export Trophy, Investment Trophy, Sustainable Development Trophy, SME Trophy, Innovation Trophy and a special 20th Edition Trophy.

Albatroz Engineering and was one of the nominees in Innovation Trophy (see photo on the right). The winner was Revigrés, a producer of floor tiles; WeDo, a software house specialized in revenue assurance was the other nominee. Read more at:

sol.sapo.pt/inicio/Interior.aspx?content_id=86033

ccilf.pt/club-daffaires/galerie-photos/soiree-de-gala-des-trophees-luso-francais-2013/



Photos: Courtesy of CCILF

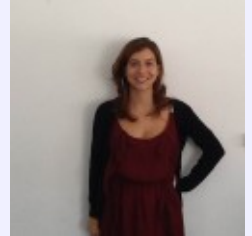


Gomes Mota, manager of Albatroz Engineering on the right

Internship season at Albatroz Engineering

Albatroz Engineering believes that a strong and lifelong link between education, R&D and work experience are essential to achieve the best and more innovative technical solutions; to discover international markets and working environments; and to satisfy professionals who are motivated towards R&D and innovation. Thus, and as in previous years, Albatroz Engineering welcomed 4 interns during the summer 2013:

Olatz Muruaga Garcia, from Bilbao, Spain, did an internship at Albatroz Engineering from May to July in 2013. During the internship the main task was to work in international marketing research, analysing the South American markets to search for business opportunities for Albatroz Engineering. Olatz proved to be a conscientious and a hard worker intern. She also demonstrated to be very efficient and always willing to offer her assistance.



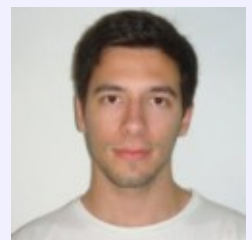
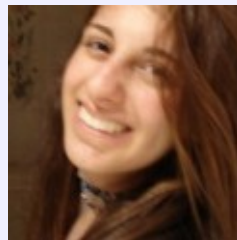
Olatz Muruaga at Albatroz Engineering



GianLuca Masotta

Gianluca Masotta, from Benevento, Italy. The internship took place during the months of Jun to August, which involved analysis and transfer of spatial data, related to land use in easements of the Portuguese transmission operator, REN. Gianluca proved to be engaged in carrying out assorted tasks and his empathy was instrumental in his integration. Olatz and Gianluca did an internship through the organisation Euroyouth Portugal under the European Union Leonardo da Vinci's program.

Clara Paiva and Filipe Silva, from Lisbon, Portugal. Using the Google web toolkit in the core of their work, both developed the architecture for a new real time interface, common to all Albatroz Engineering products. Both have shown commitment, focus and hardwork during a short, intense internship.



Clara Paiva and Filipe Silva

ALBATROZ Engineering
www.albatroz-eng.com

Research, Development and Innovation

Rua Maria 53, 1 Esq, P-1170-210 LISBOA PORTUGAL